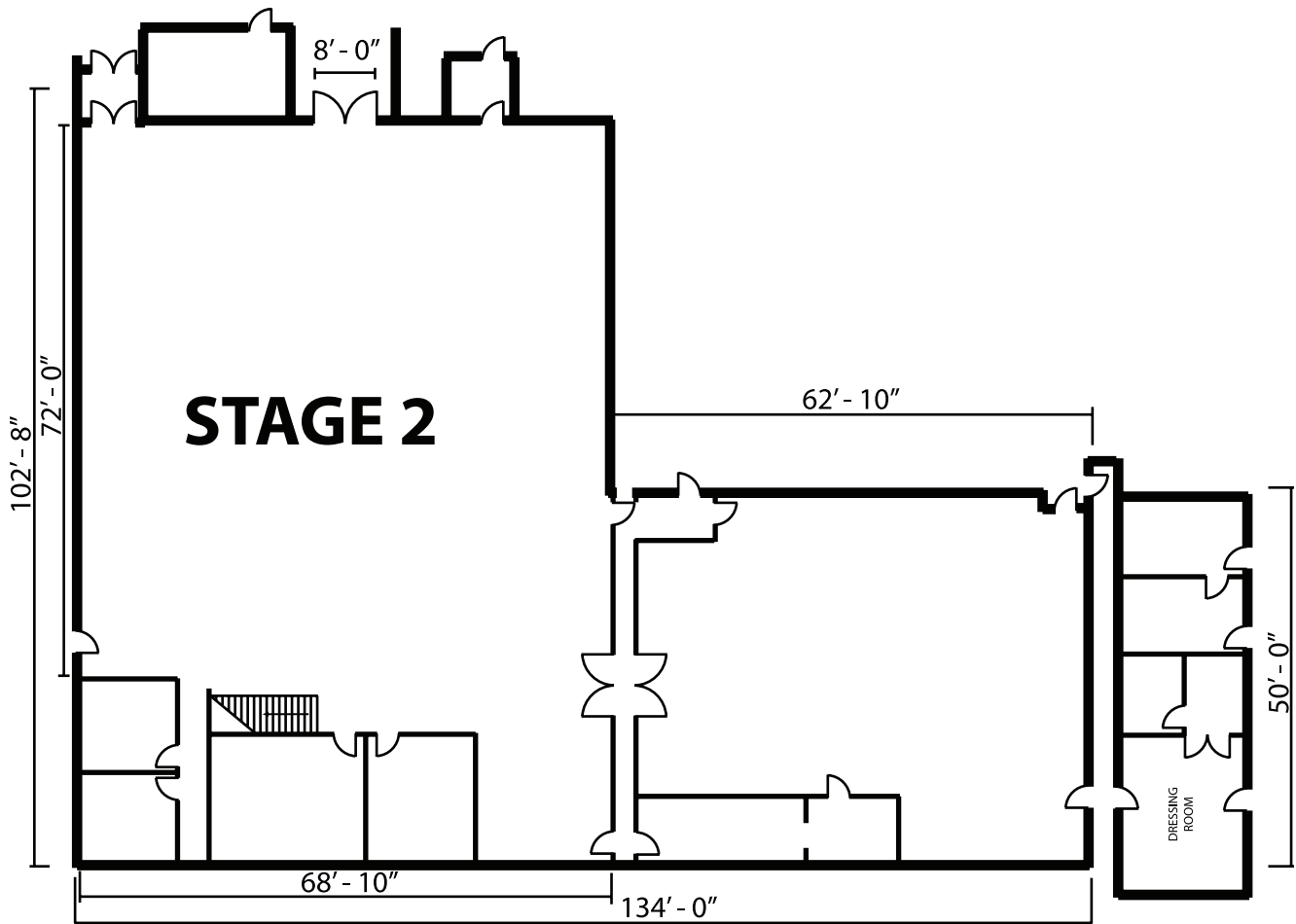


# STAGE 2

Hollywood Center Studios



LENGTH: 97'

WIDTH: 70'

HEIGHT: 24'

AREA SQUARE-FEET: 9,574

FOR SYNC SOUND: Yes

AUDIENCE-RATED: Yes: 250 + crew of 49; A3 rating ( ability to do shows)

CAT WALKS: Yes

FLOORS: Wood over slab

DRIVE-IN: Yes

AIR CONDITIONING: 80 tons/silent

AC POWER: 4800 amps

DC POWER: 2000 amps

DOOR SIZE: Ht. 18' Wd. 14'

HARD-COVED CYC: No

VIDEO CONTROL ROOM CONNECTIVITY: Yes; triax & audio break-outs/tech power

Hollywood Center Studios  
1040 N.Las Palmas Ave.  
Hollywood, CA  
[T] (323) 860-0000  
[F] (323) 860-8105  
stages@hollywoodcenter.com

Note: Dimensions are for overall stage size and do not take into account stage irregularities. Production Company representatives should verify dimensions for particular applications.